

C4



Speed and flexibility for machine tending operation in confined workspaces

- High speed and repeatability for maximum productivity
- Compact design for enhanced configuration flexibility
- C4-A901 long arm model also available

Model Number	C4 - A 60 1 S □ - UL			
Payload	4	A	60	1 S □ - UL
Arm length	6			
Brake equipment	1			
Environment	S			
UL specification				□ : Non UL compliant -UL : UL compliant
Mounting type				□ : Table Top Mounting R : Ceiling Mounting

Payload: 4 : 4kg
 Arm length: 6 : 600mm, 9 : 900mm
 Brake equipment: 1 : Brakes on all joints
 Environment: S : Standard model, C : Cleanroom & ESD (electrostatic discharge) model

Specifications

Model name		C4	C4L
Model number		C4-A601□	C4-A901□
Max. motion range	P point:through the center of J4/J5/J6	600 mm	900 mm
	Wrist flange surface	665 mm	965 mm
Payload	Rated	1 kg	
	Maximum	4 kg (5 kg with arm downward positioning)	
Repeatability	Joints #1-#6	±0.02 mm	±0.03 mm
Standard cycle time ^{*1}		0.37 sec	0.47 sec
Max. operating speed	Joint #1	450 deg/sec	275 deg/sec
	Joint#2	450 deg/sec	275 deg/sec
	Joint #3	514 deg/sec	289 deg/sec
	Joint #4	555 deg/sec	
	Joint #5	555 deg/sec	
	Joint #6	720 deg/sec	
Allowable moment of inertia ^{*2}	Joint #4	0.15 kg·m ²	
	Joint #5	0.15 kg·m ²	
	Joint #6	0.1 kg·m ²	
Installation environment		Standard/Cleanroom ^{*3} & ESD	
Mounting type		Table Top/Ceiling ^{*4}	
Weight (cable not included)		27 kg	29 kg
Applicable Controller		RC700-A	
Installed wire for customer use		9 Pin D-Sub	
Installed pneumatic tube for customer		Φ4mm x 4 : 0.59 MPa (6 kgf/cm ²)	
Power		AC200-240 V Single phase	
Power Consumption ^{*5}		1.7 kVA	
Cable length		3 m/5 m/10 m/15 m/20 m	
Safety standard		CE, KC, UL	

*1: Cycle time based on round-trip arch motion (300mm horizontal, 25 mm vertical) with 1kg payload (path coordinates optimized for maximum speed) .

*2: When payload center of gravity is aligned with Joint #4 ; if not aligned with Joint #4, set parameters using INERTIA command.

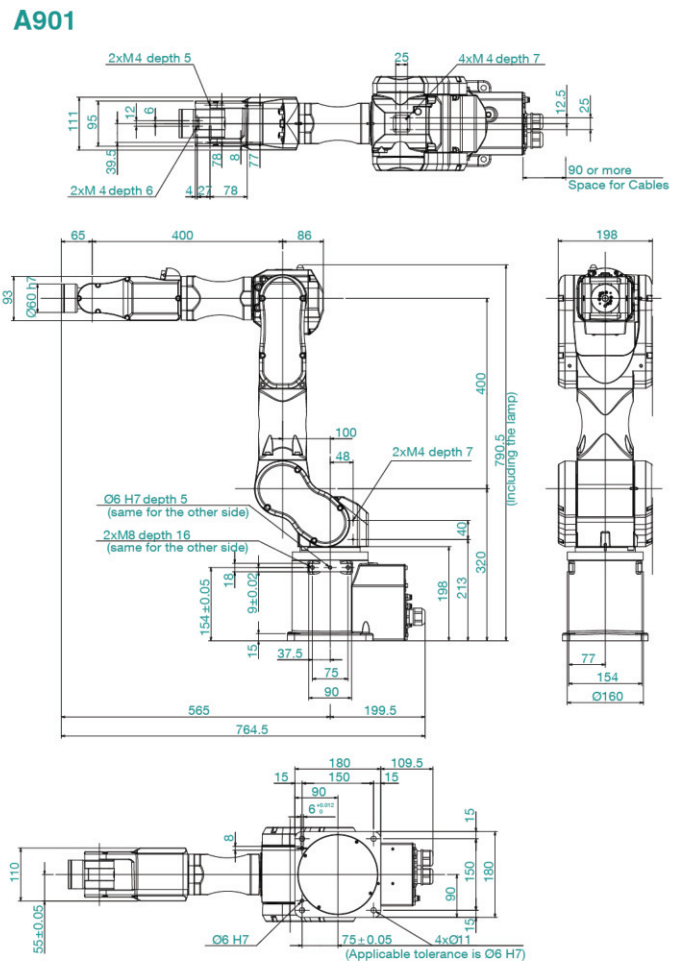
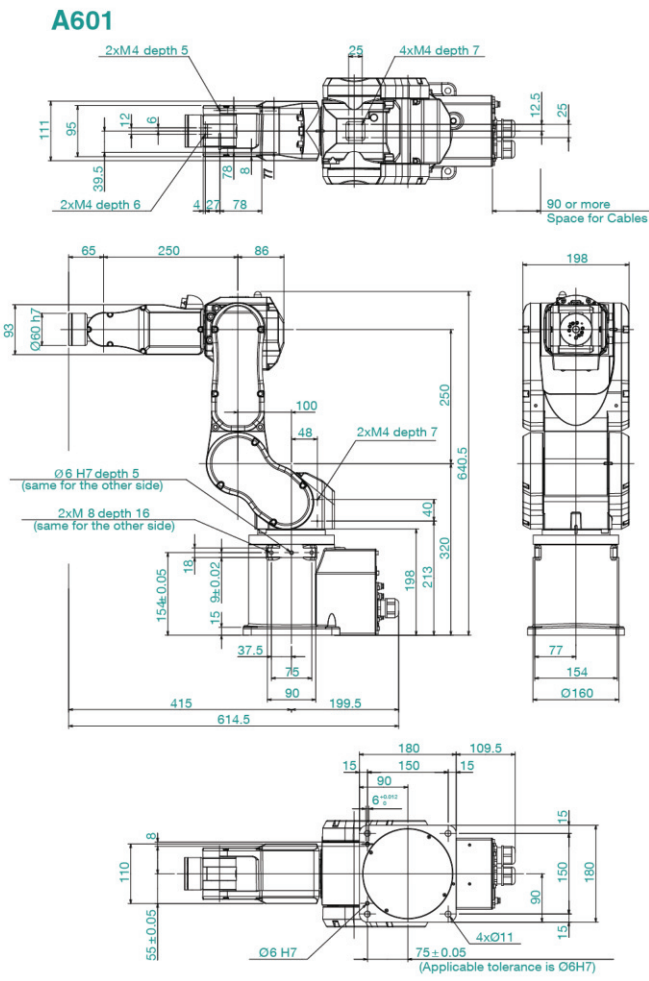
*3: Complies with ISO Class 3 (ISO14644-1) and older Class 1 (less than 10 0.1 μm particles per 28,317cm³1cft) cleanroom standards.

*4: Ceiling-mounted robots should be programmed using the EPSON RC+ software ceiling-mount settings.

*5: Varies according to operating environment and program.

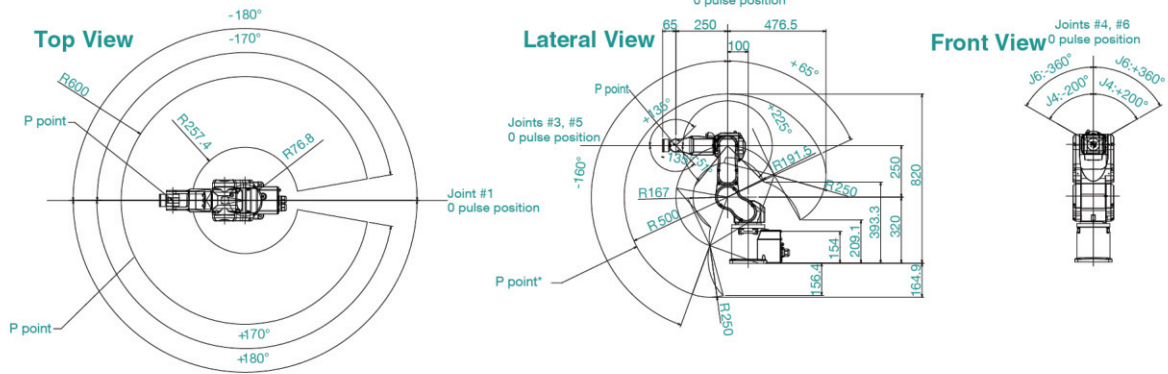
Outer Dimensions

[Unit: mm]

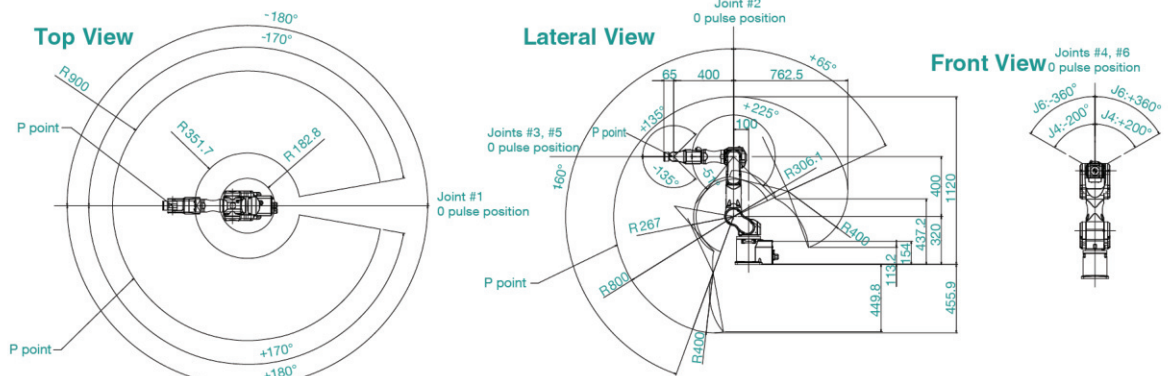


Motion Range

A601



A901



SCARA robots

6-axis robots

Controllers

Software

Vision systems

Force-sensing systems

Options